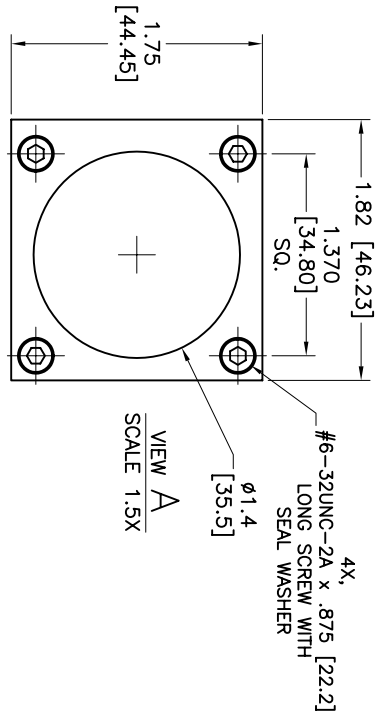


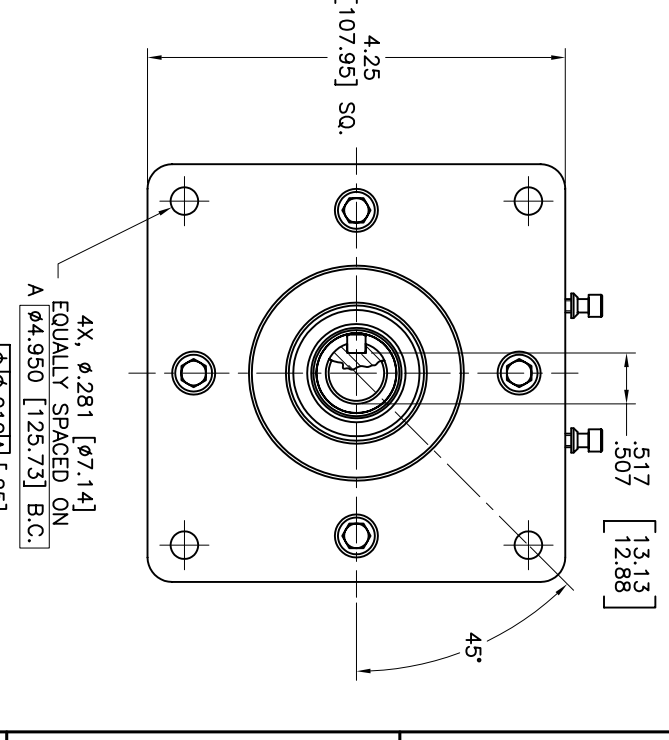
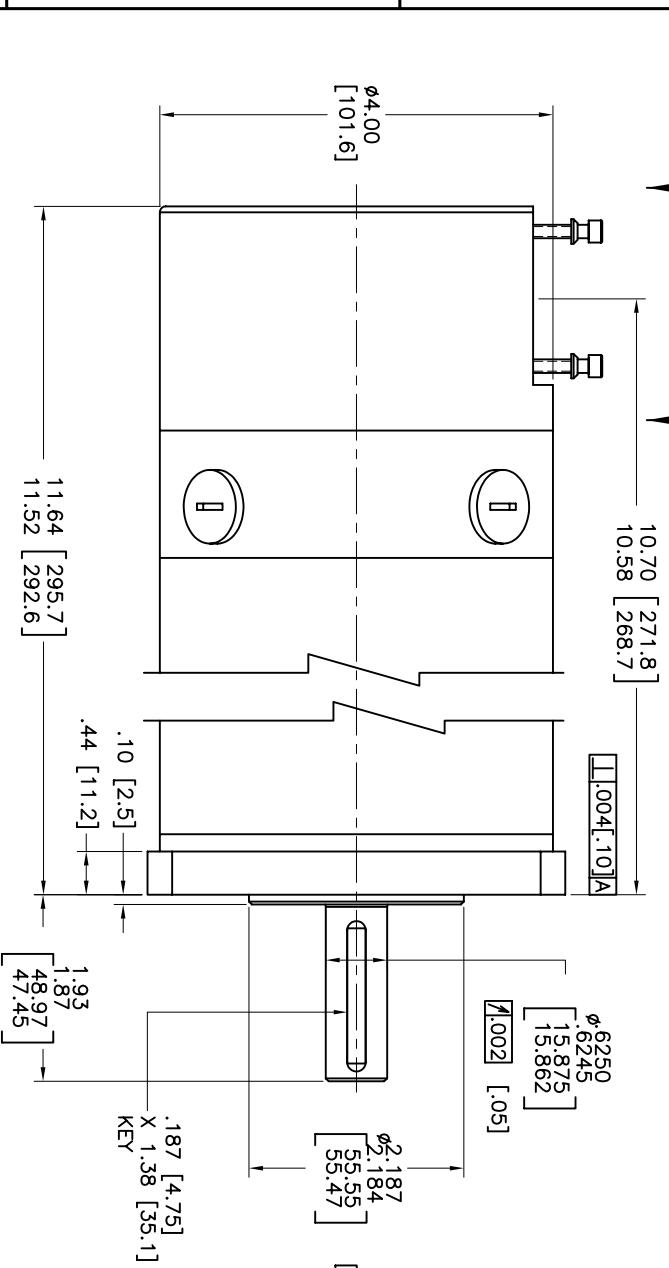
MOTOR MODEL NO.:		GM4050-60	
CONFIG. CODE:		GM4050-60-00602811-225B	
MOTOR CONSTANTS	UNITS	VALUE	
CONTINUOUS STALL TORQUE	IN-LB	41.3	
PEAK TORQUE	IN-LB	206.5	
TORQUE CONSTANT (K _T)	IN-LB/AMPS	5.06	
R _A *	OHMS	0.9	
INDUCTANCE (L _A)*	MHY	6.30	
BEEMF *	VOLTS/1000 RPM	60	
MAXIMUM SPEED	RPM	2200	
INERTIA (J _A)	IN-LB-SEC ²	0.01980	
TACHOMETER OUTPUT	VOLTS/1000 RPM	-	
TACHOMETER RIPPLE	PERCENT	-	
WEIGHT	LB	-	

MOTOR MODEL NO.:		GM4050-60	
CONFIG. CODE:		GM4050-60-00602811-225B	
MOTOR CONSTANTS	UNITS	VALUE	
CONTINUOUS STALL TORQUE	IN-LB	41.3	
PEAK TORQUE	IN-LB	206.5	
TORQUE CONSTANT (K _T)	IN-LB/AMPS	5.06	
R _A *	OHMS	0.9	
INDUCTANCE (L _A)*	MHY	6.30	
BEEMF *	VOLTS/1000 RPM	60	
MAXIMUM SPEED	RPM	2200	
INERTIA (J _A)	IN-LB-SEC ²	0.01980	
TACHOMETER OUTPUT	VOLTS/1000 RPM	-	
TACHOMETER RIPPLE	PERCENT	-	
WEIGHT	LB	-	

MOTOR MODEL NO.:		GM4050-60	
CONFIG. CODE:		GM4050-60-00602811-225B	
MOTOR CONSTANTS	UNITS	VALUE	
CONTINUOUS STALL TORQUE	IN-LB	41.3	
PEAK TORQUE	IN-LB	206.5	
TORQUE CONSTANT (K _T)	IN-LB/AMPS	5.06	
R _A *	OHMS	0.9	
INDUCTANCE (L _A)*	MHY	6.30	
BEEMF *	VOLTS/1000 RPM	60	
MAXIMUM SPEED	RPM	2200	
INERTIA (J _A)	IN-LB-SEC ²	0.01980	
TACHOMETER OUTPUT	VOLTS/1000 RPM	-	
TACHOMETER RIPPLE	PERCENT	-	
WEIGHT	LB	-	



VIEW A
SCALE 1.5X



ENCODER'S DATA CHART	
LINE COUNT	2000 PPR
FREQUENCY RESPONSE	200 KHZ MAX. (UP TO 85 °C) 100 KHZ MAX. (UP TO 100 °C)
RISE AND FALL TIME	100 NSEC. MAX.
FRICITION TORQUE	5.9 X 10 ⁻³ N · m MAX. (60 g · cm MAX.)
ROTOR MOMENT OF INERTIA	1 X 10 ⁻⁶ kg · m ² MAX.
MAX. SPEED	100 S ⁻¹ (6000 RPM)
OPERATING TEMP. RANGE	-20 °C ~ +100 °C
STORAGE TEMP. RANGE	-25 °C ~ +100 °C
VIBRATION (TEST ARTICLES)	49 m/s ² (5 G) 10 ~ 500 HZ.
SHOCK (TEST ARTICLES)	490 m/s ² (50 G) 11 MSEC.

1. WITH A POSITIVE VOLTAGE APPLIED TO PIN#3 (RED MOTOR LEAD)
 2. INCHES [MILLIMETERS].
 3. MOTOR FINISH: BLACK.
 4. SHAFT SEAL REQUIRED.
- DRIVE SHAFT WILL TURN IN THE CW DIRECTION AS VIEWED FROM THE SHAFT END.
- NOTES: UNLESS OTHERWISE SPECIFIED.

UNLESS OTHERWISE SPECIFIED		APPROVAL		DATE	
DESIGNER	DATE	CHK'D BY	DATE	APP'D BY	DATE
DECIMAL: XXX = 30/100		R.D.M.	16MAY08	R.D.M.	16MAY08
ANGULAR: < = 30°		R.D.M.	16MAY08	R.D.M.	16MAY08
FINISH: 125 / MAXIMUM		R.D.M.	16MAY08	R.D.M.	16MAY08

THE INFORMATION CONTAINED WITHIN THIS DOCUMENT WAS ORIGINATED BY AND IS THE EXCLUSIVE PROPERTY OF GLENTEK INC. THIS PROPRIETARY INFORMATION SHALL NOT BE REPRODUCED, COPIED, TRANSMITTED, OR IN ANY MANNER DISCLOSED TO ANY OTHER PARTY WITHOUT THE WRITTEN PERMISSION FROM GLENTEK INC.

208 Standard Street
Elyria, OH 44035
310.222.0000 FAX 310.222.7706
www.glenetek.com

GLENTEK
Solutions for Motion Control

DRAWING TITLE: **INSTALLATION DRAWING**

MODEL: GM4050-60
DRAWING NUMBER: 6598-1
SCALE: 1:1
FILE NAME: 6598-1A.DWG
SHEET 1 OF 1