

Offline Intercon Quick-Start Guide


Thank you for your purchase of Centroid Offline Intercon Conversational.
Enclosed in your package you will find your Offline USB Key.

Please download the Offline Intercon installation software here:

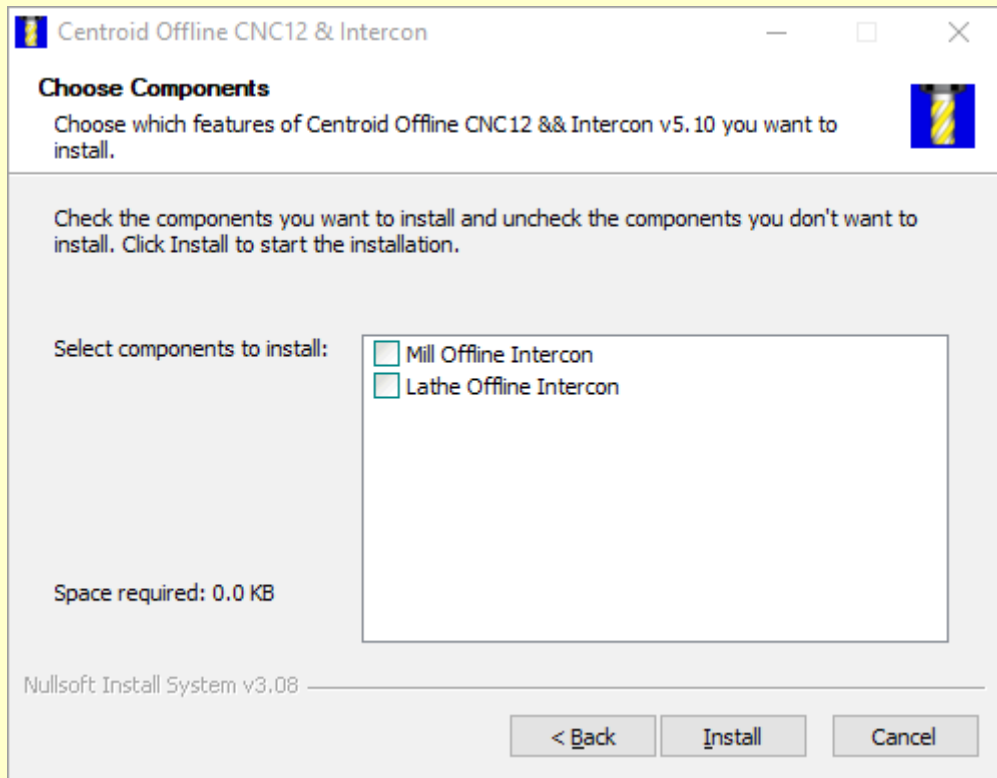
https://centroidcnc.com/centroid_diy/centroid_cnc_software_downloads.html

Instructions for Windows 7, 8.1, 10, or 11 OS:

- 1.) Download the .zip file
- 2.) Extract the contents of the .zip file onto your PC desktop
- 3.) Double-click the CNC12 executable.

Name	Date modified	Type	Size
 centroid_v5.10_mill_lathe_offline_intercon_installer.exe	4/16/2024 3:47 PM	Application	134,365 KB

- 4.) Choose "Mill Offline Intercon" or "Lathe Offline Intercon" to install.



- 5.) After installation install your USB Key into one of your USB ports
- 6.) Open the "CNC12 Mill Demo" or "CNC12 Lathe Demo" and make parts.
- 7.) Choose F5 CAM then F1 ICN to start Intercon.

Offline Intercon Quick-Start Guide

Note if USB key is not recognized:

- 1.) Reboot the computer
- 2.) Try a different USB port
- 3.) Often laptops have power saving settings the put USB ports to Sleep which can cause an issue, disable those types of power saving features on the PC.

Intercon Instructions and Tutorials are in Chapter 10 of the Mill Operator Manual and Chapter 8 of the Lathe Operator Manual here:

https://centroidcnc.com/centroid_diy/centroid_manuals.html

Offline Intercon Quick-Start Guide

FAQ on Offline Intercon

Question: Can I install this on numerous PC's?

Answer: Yes, just take your USB Key along with you PC to PC.

Question: What happens if I do not have my USB Key inserted in the PC?

Answer: The offline will work in demo mode, limiting you to one screen of conversational operations.

Question: Can I run Mill and Lathe offline Intercon with the same USB Key?

Answer: Yes, you can run both.

Question: Does Intercon Generate G-Code?

Answer: Yes Intercon generates industry standard G-Code

Question: How do I copy over the tool library from CNC machine to the offline machine?

Answer: Copy the .tl tool library file from the main cnc directory (cncm for mill/plasma, cnct for lathe) and paste it into the appropriate offline Intercon directory:

For Mill: C:\Centroid_Mill_Intercon_Offline\

For Lathe: C:\Centroid_Lathe_Intercon_Offline\

For Plasma: C:\Plasma_Intercon\

Question: Is there a Training Video on how to use Mill offline Intercon?

Answer: Yes, find the Mill video at:

http://www.centroidcnc.com/video_milltrain_index.html

Question: Is there a Lathe Training Video on how to your Lathe offline Intercon?

Answer: Yes, Find the Lathe Video at: <https://youtu.be/rEY3uKOUpZQ>

Question: Where can I find a manual on Intercon?

Answer: Download the Mill or Lathe Manual at:

http://www.centroidcnc.com/centroid_diy/centroid_manuals.html

then look for the Intercon Chapter, it will have detailed information and examples.