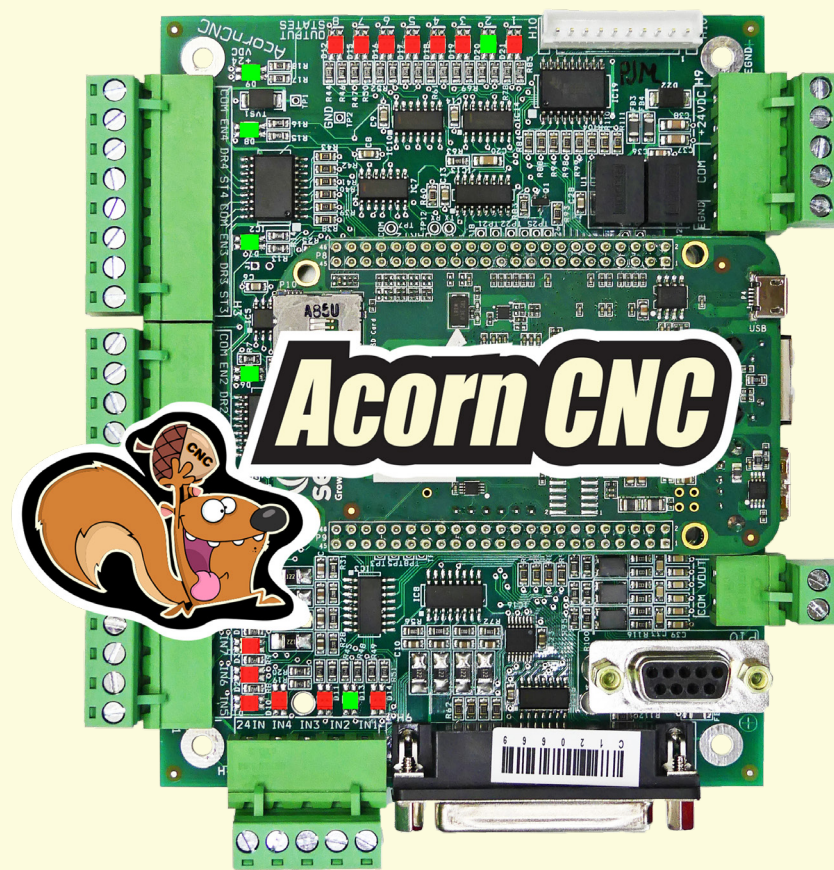
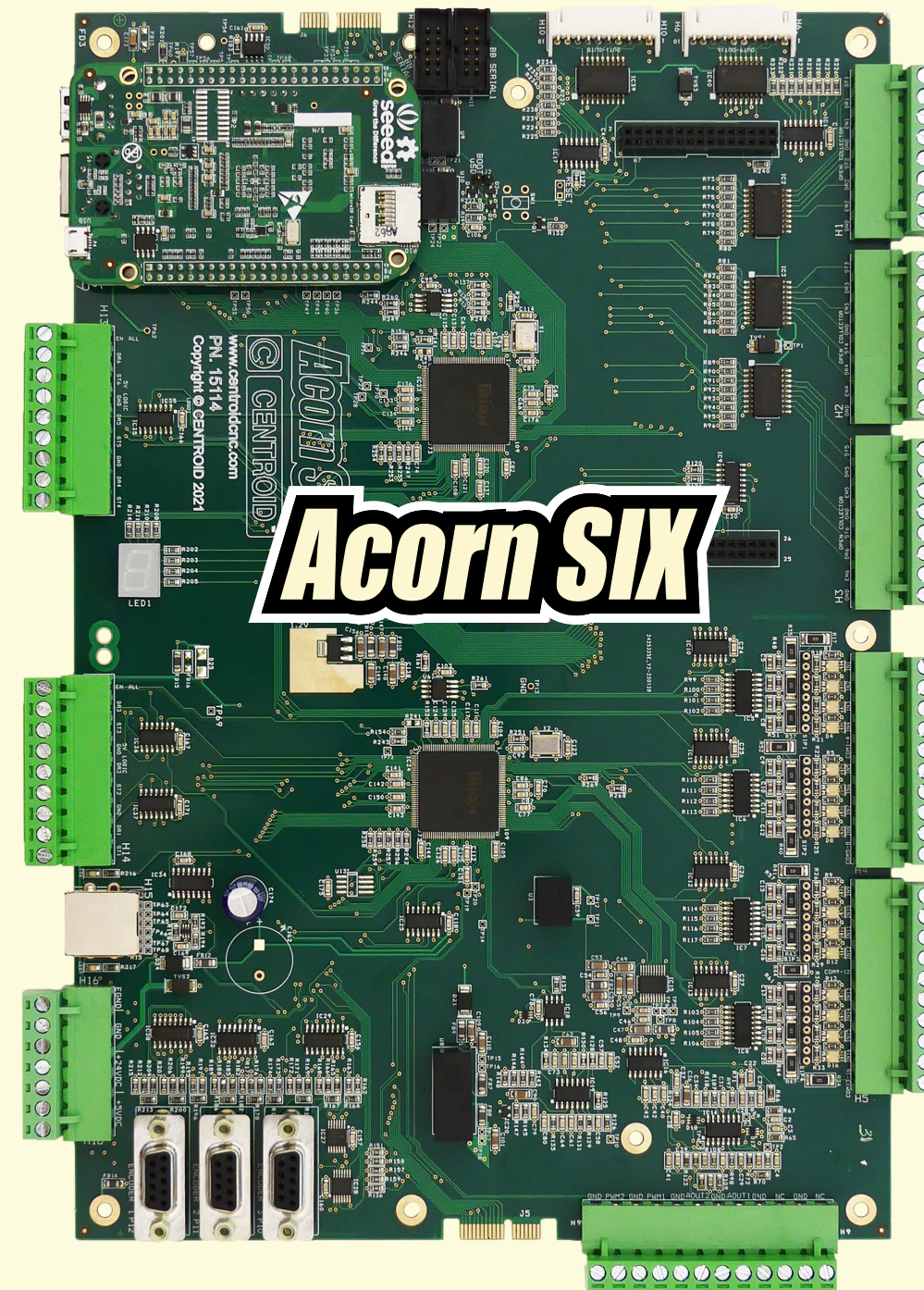


# Centroid Plasma CNC Controller System Selection

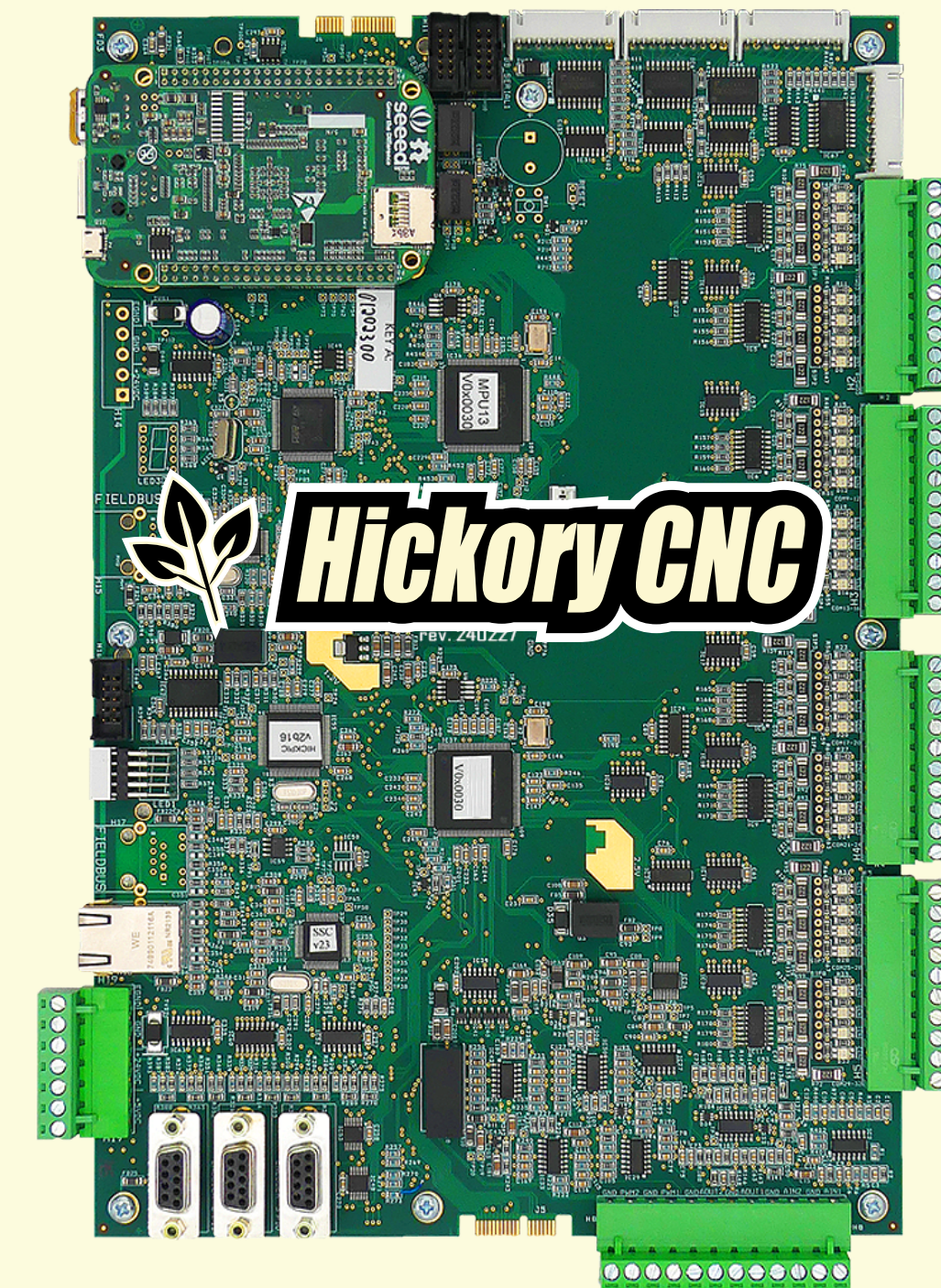
## 1.) Choose a Controller Main Board Platform



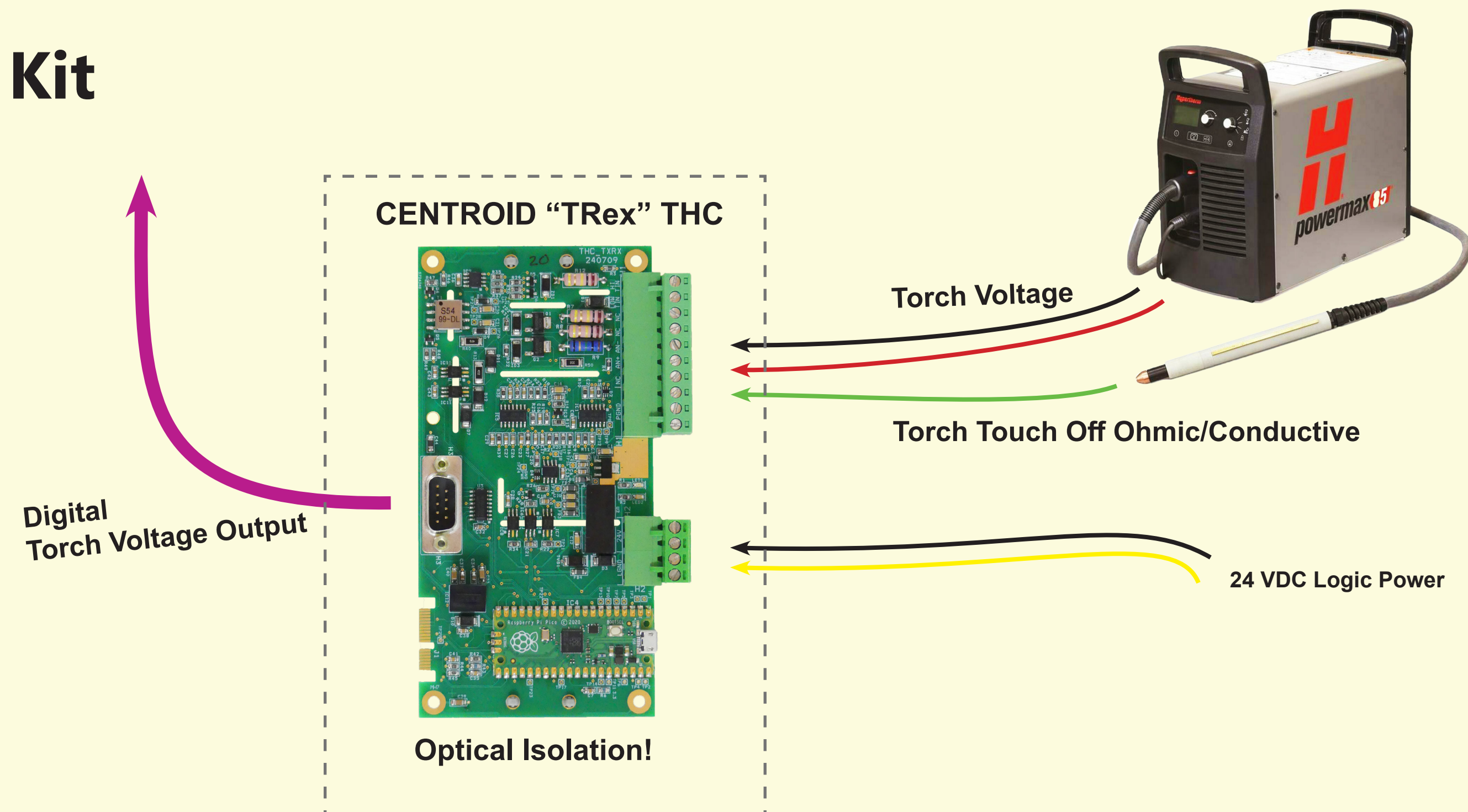
-OR-



-OR-



## 2.) Add Centroid THC Kit



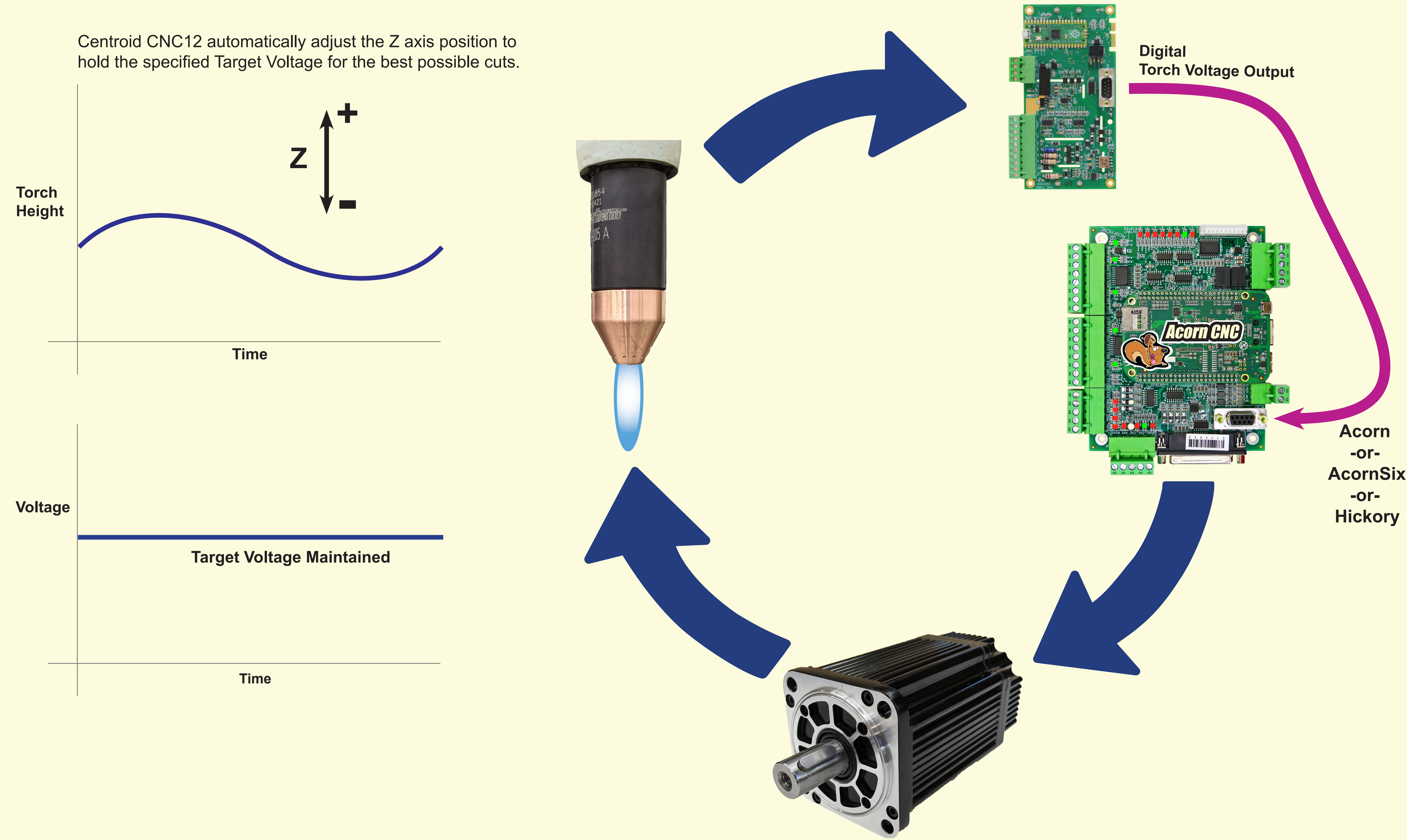


The Centropod Plasma CNC controller provides pro level performance with real time Closed Loop THC control.

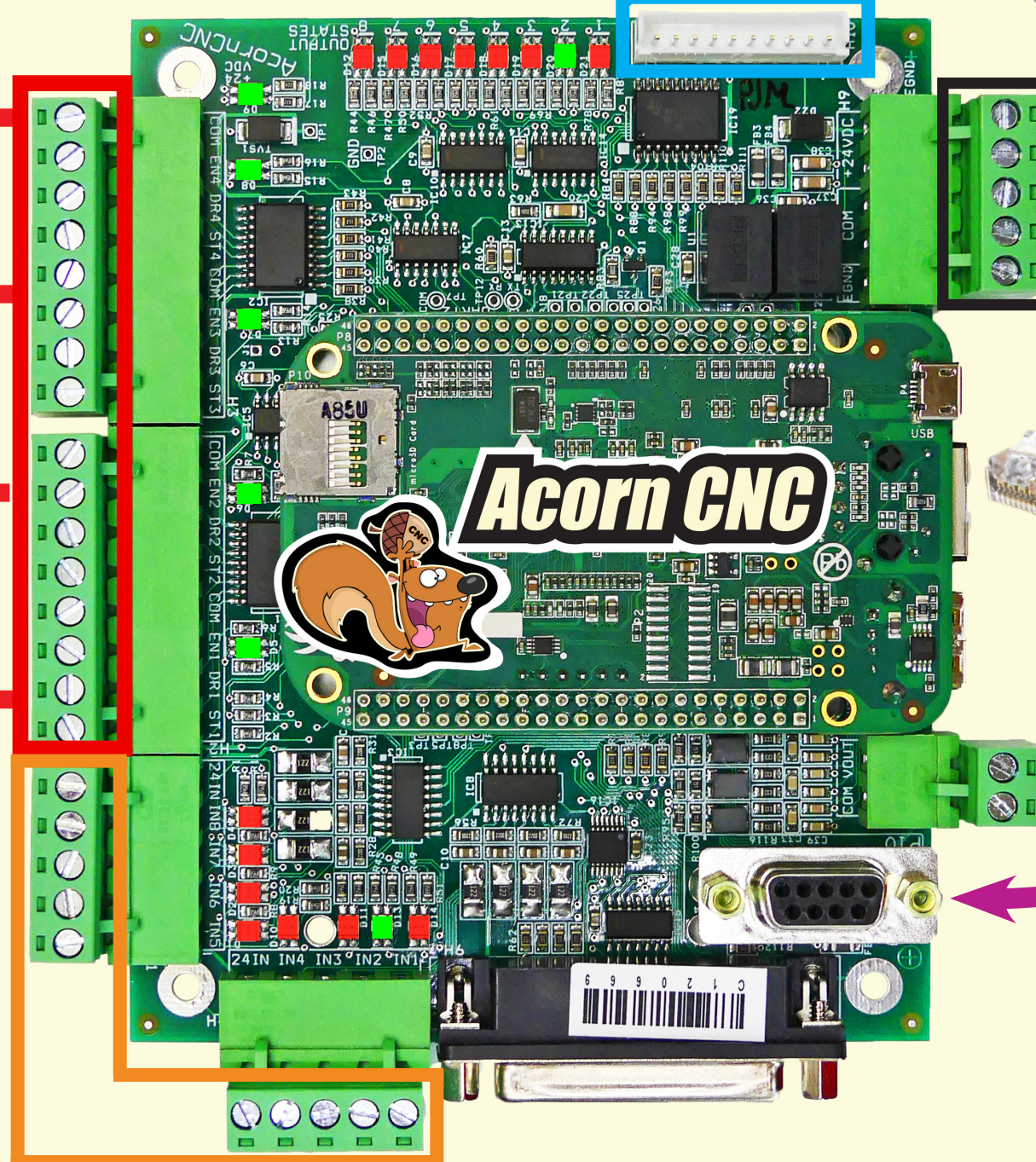
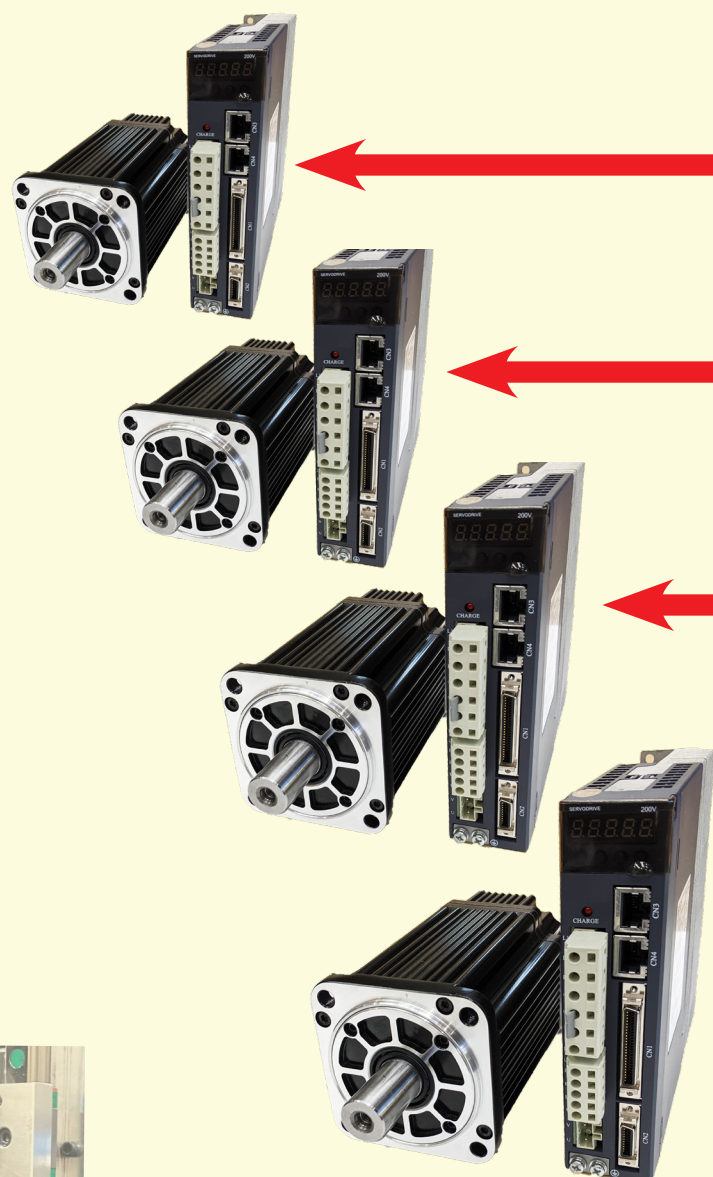
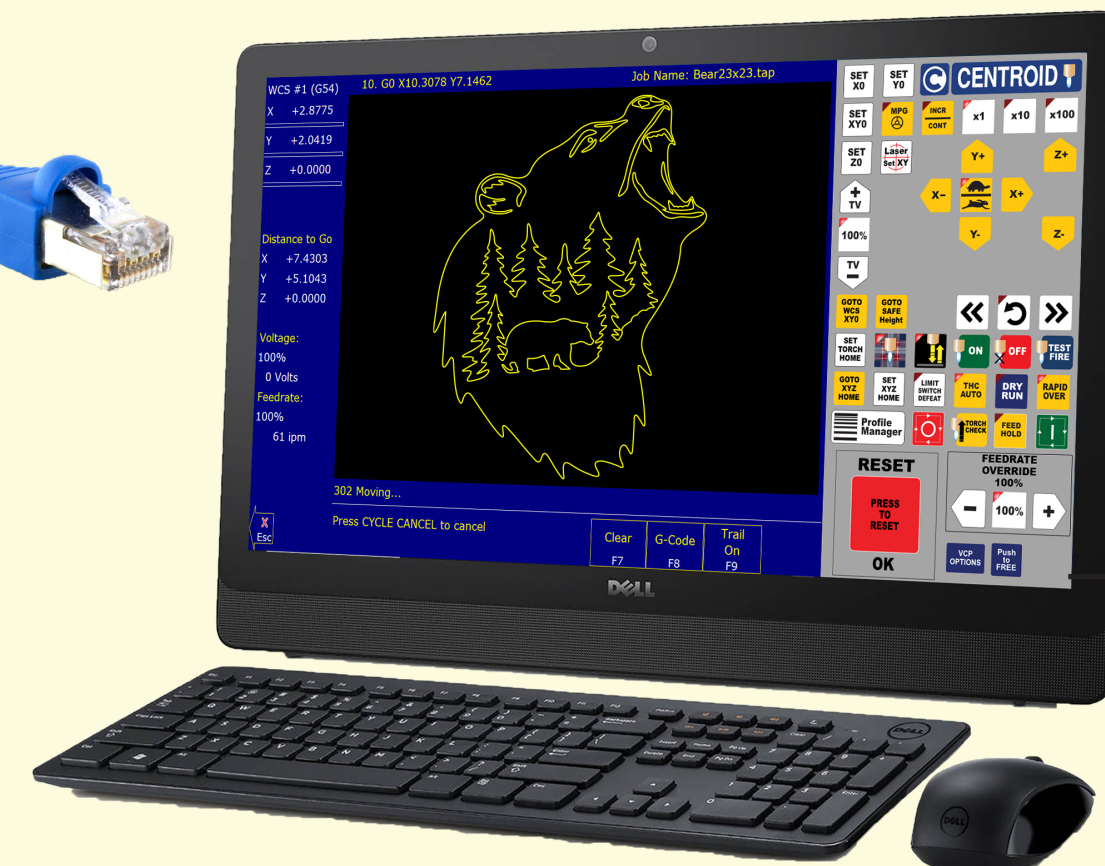
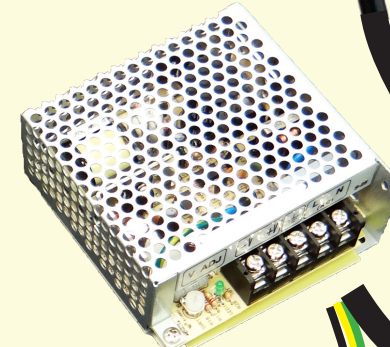
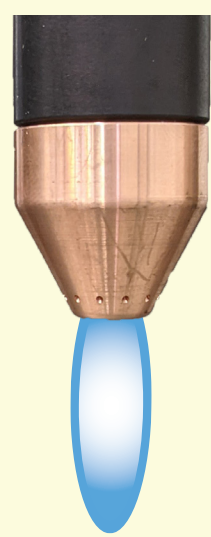
Centroid's Torch Height Controller provides real time closed loop operation between the Arc Voltage and the Torch Height.

The THC continuously reads the arc voltage and relays that information to the Acorn controller via Acorn's high speed serial port.

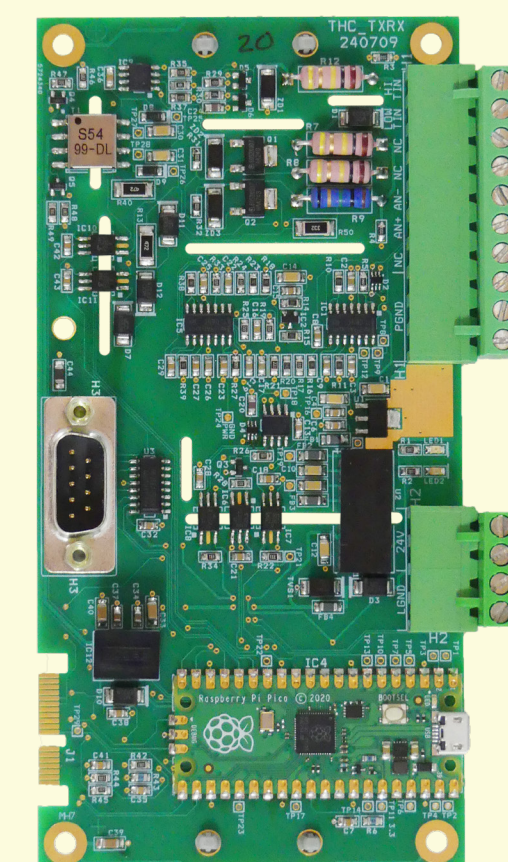
Centroid's CNC12 plasma software reads the Arc voltage and adjusts the Z axis position to maintain the Torch target voltage on the fly closing the loop between the Torch Voltage and the Torch Height.







CENTROID "TRex" THC



Optical Isolation!

