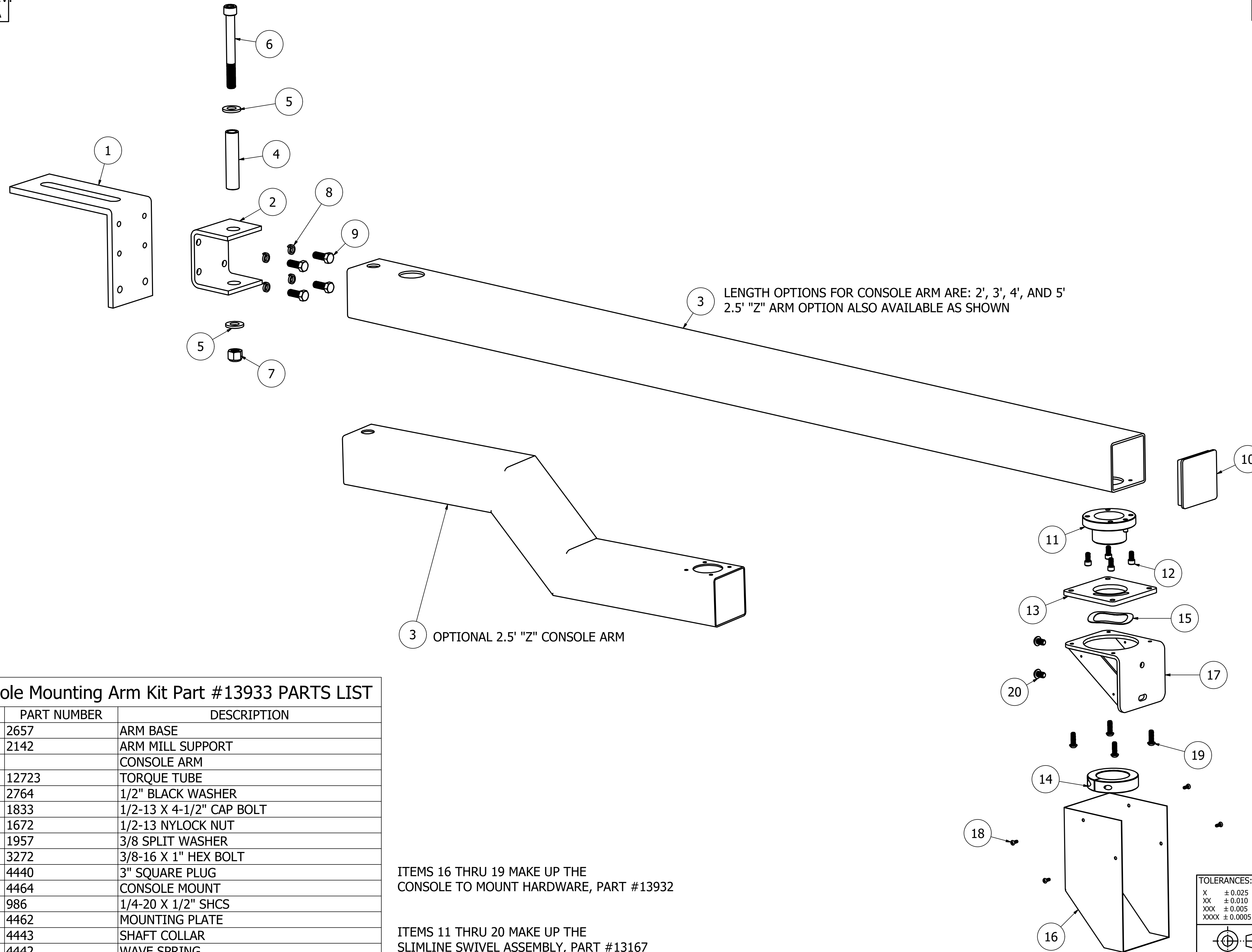


DRAWING #: D00749 REV: A

REVISION HISTORY				
ZONE	REV	DESCRIPTION	DATE	APPROVED
	A	INITIAL RELEASE		




**SlimLine Console Mounting Arm Kit Part #13933 PARTS LIST**

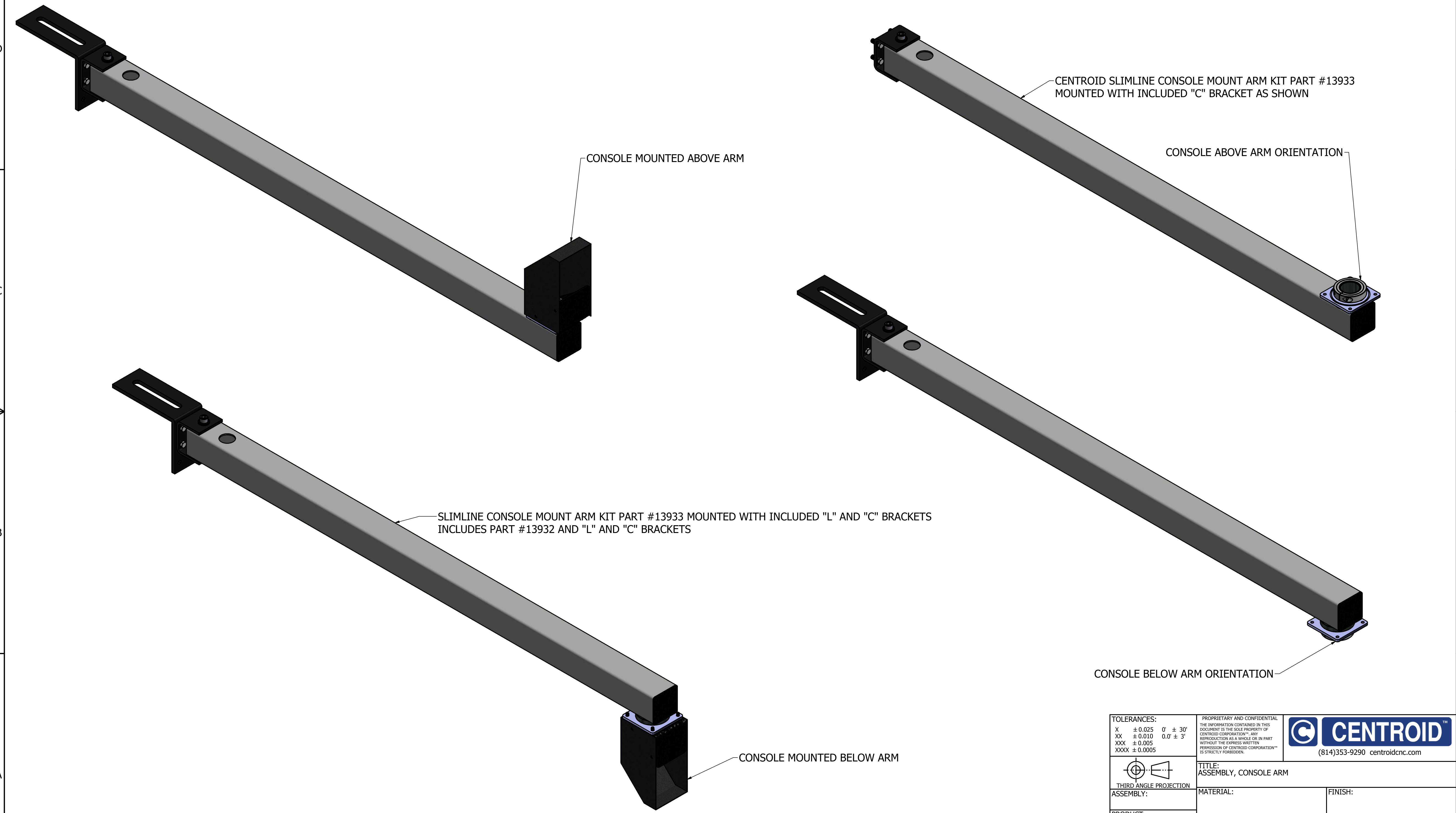
ITEM	QTY	PART NUMBER	DESCRIPTION
1	1	2657	ARM BASE
2	1	2142	ARM MILL SUPPORT
3	1		CONSOLE ARM
4	1	12723	TORQUE TUBE
5	2	2764	1/2" BLACK WASHER
6	1	1833	1/2-13 X 4-1/2" CAP BOLT
7	1	1672	1/2-13 NYLOCK NUT
8	4	1957	3/8 SPLIT WASHER
9	4	3272	3/8-16 X 1" HEX BOLT
10	1	4440	3" SQUARE PLUG
11	1	4464	CONSOLE MOUNT
12	4	986	1/4-20 X 1/2" SHCS
13	1	4462	MOUNTING PLATE
14	1	4443	SHAFT COLLAR
15	1	4442	WAVE SPRING
16	1	8292	COVER
17	1	8355	BRACKET
18	4	1490	6-32 X 3/8" PHIL PAN SCREW
19	4	2392	1/4-20 X 3/4" BHCS
20	2	2102	5/16-18 X 1/2" BHCS


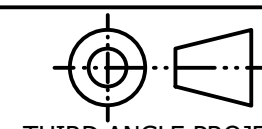
ITEMS 16 THRU 19 MAKE UP THE CONSOLE TO MOUNT HARDWARE, PART #13932

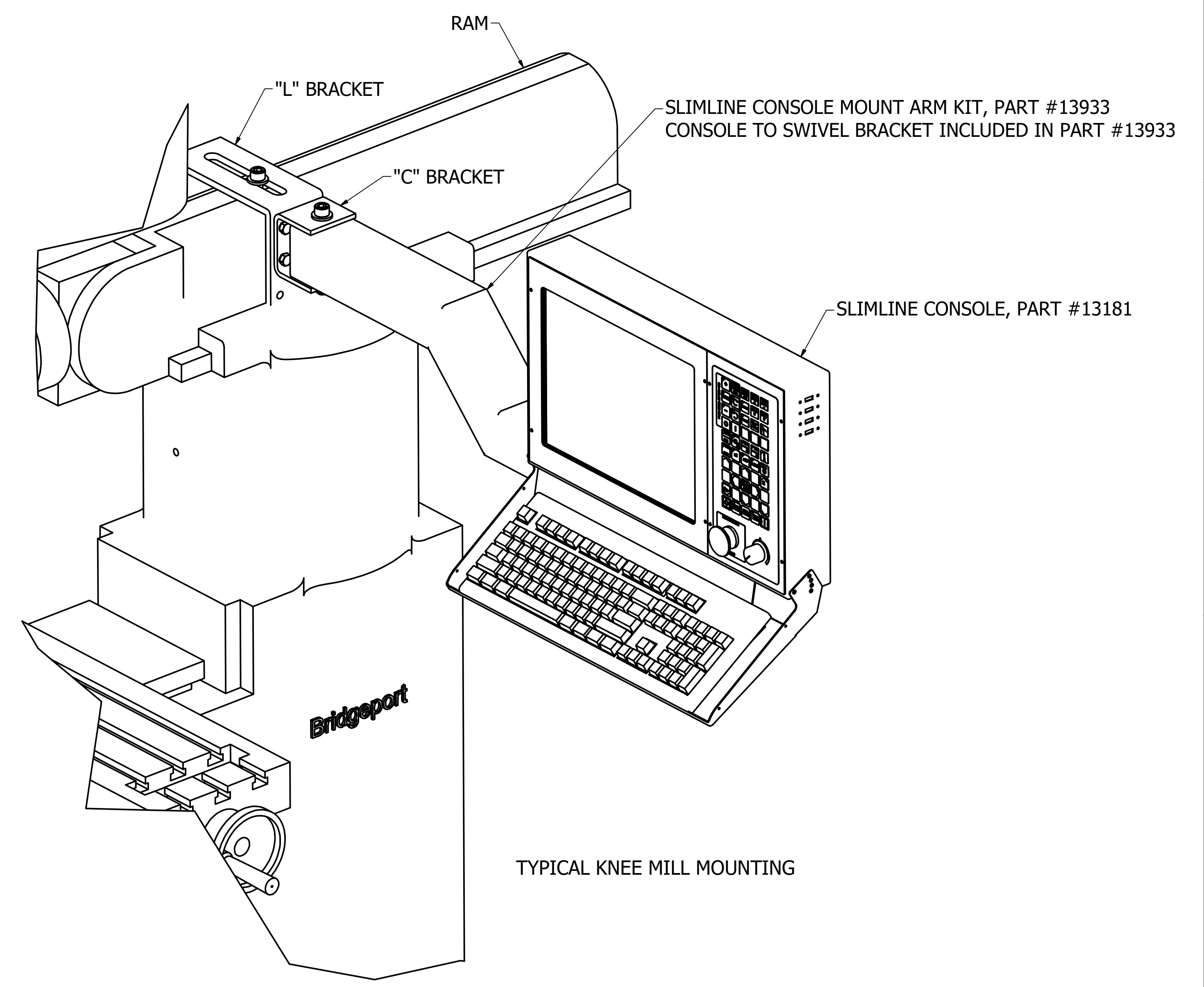
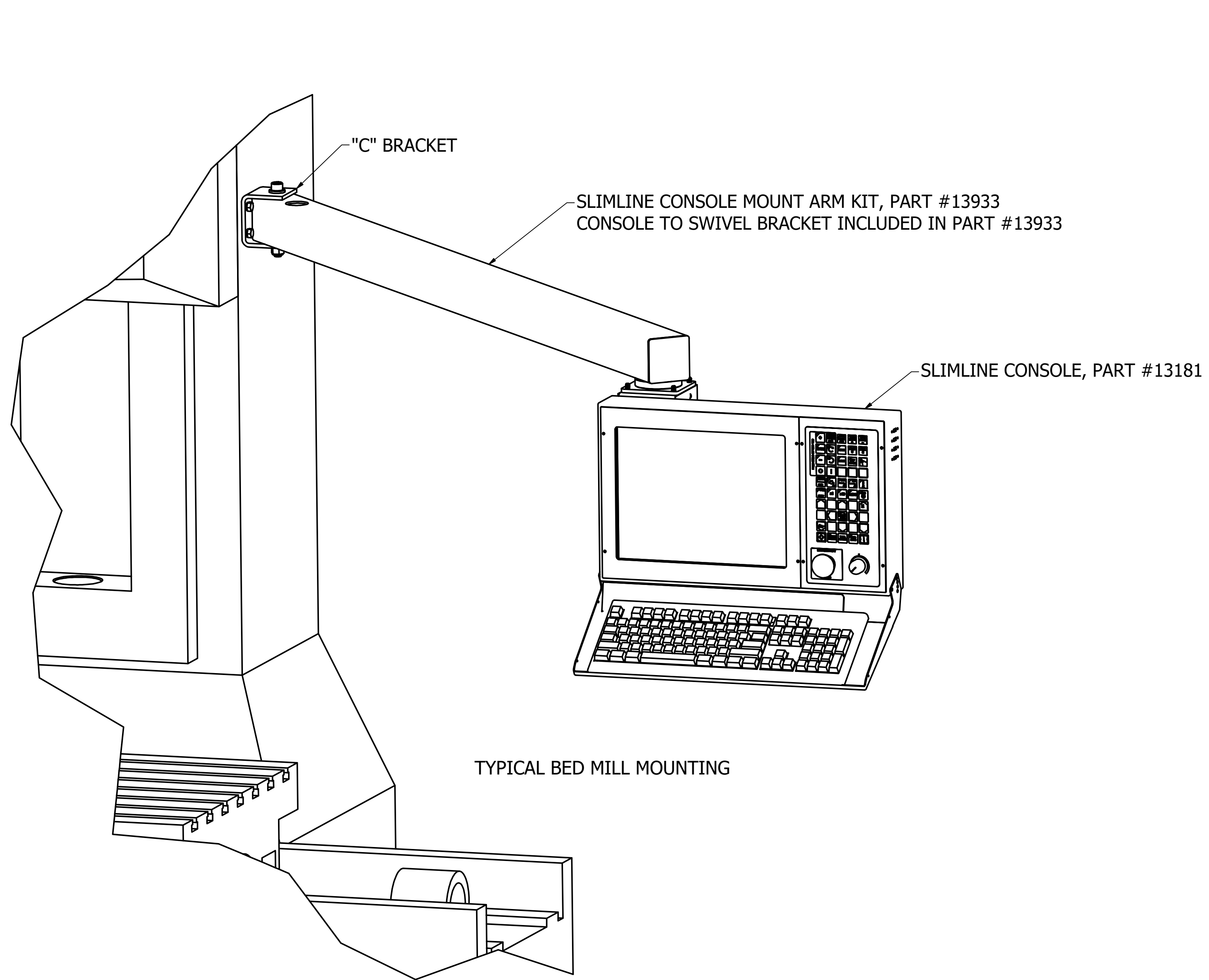
ITEMS 11 THRU 20 MAKE UP THE SLIMLINE SWIVEL ASSEMBLY, PART #13167

PART #11028 - CONDUIT AND CABLE PACKAGE FOR CONSOLE #13139  
PART #13150 - CONDUIT AND CABLE PACKAGE FOR CONSOLE #13181

<b>TOLERANCES:</b> X ± 0.025 0° ± 30' XX ± 0.010 0.0° ± 3' XXX ± 0.005 XXXX ± 0.0005		PROPRIETARY AND CONFIDENTIAL THE INFORMATION CONTAINED IN THIS DOCUMENT IS THE SOLE PROPERTY OF CENTROID CORPORATION™. ANY REPRODUCTION AS A WHOLE OR IN PART WITHOUT THE EXPRESS WRITTEN PERMISSION OF CENTROID CORPORATION™ IS STRICTLY FORBIDDEN.		 (814)353-9290 centroidcnc.com	
THIRD ANGLE PROJECTION ASSEMBLY:		TITLE: ASSEMBLY, CONSOLE ARM			
PRODUCT:		MATERIAL:		FINISH:	
DRAWN: CNC User		APPROVED:		BARCODE:	
PART #:		DRAWING #: D00749		REV: A	
SIZE: D		WEIGHT: N/A		SCALE:	
SHEET #: 1 OF 5					



<b>TOLERANCES:</b> X ± 0.025 0° ± 30' XX ± 0.010 0.0° ± 3' XXX ± 0.005 XXXX ± 0.0005		PROPRIETARY AND CONFIDENTIAL <small>THE INFORMATION CONTAINED IN THIS DOCUMENT IS THE SOLE PROPERTY OF CENTROID CORPORATION™. ANY REPRODUCTION AS A WHOLE OR IN PART WITHOUT THE EXPRESS WRITTEN PERMISSION OF CENTROID CORPORATION™ IS STRICTLY FORBIDDEN.</small>		 (814)353-9290 centroidcnc.com	
<b>TITLE:</b> ASSEMBLY, CONSOLE ARM					
<b>THIRD ANGLE PROJECTION</b> 		<b>MATERIAL:</b>		<b>FINISH:</b>	
<b>ASSEMBLY:</b>		<b>PRODUCT:</b>		<b>BARCODE:</b>	
<b>DRAWN:</b> CNC User		<b>APPROVED:</b>		<b>PART #:</b>	
<b>SIZE:</b> D		<b>WEIGHT:</b> N/A		<b>DRAWING #:</b> D00749	
<b>SCALE:</b>		<b>SHEET #:</b> 2 OF 5		<b>REV:</b> A	



TOLERANCES:

X	± 0.025	0' ± 30'
XX	± 0.010	0.0' ± 3'
XXX	± 0.005	
XXXX	± 0.0005	

PROPRIETARY AND CONFIDENTIAL  
THE INFORMATION CONTAINED IN THIS DOCUMENT IS THE SOLE PROPERTY OF CENTROID CORPORATION™. ANY REPRODUCTION AS A WHOLE OR IN PART WITHOUT THE EXPRESS WRITTEN PERMISSION OF CENTROID CORPORATION™ IS STRICTLY FORBIDDEN.



THIRD ANGLE PROJECTION

ASSEMBLY:

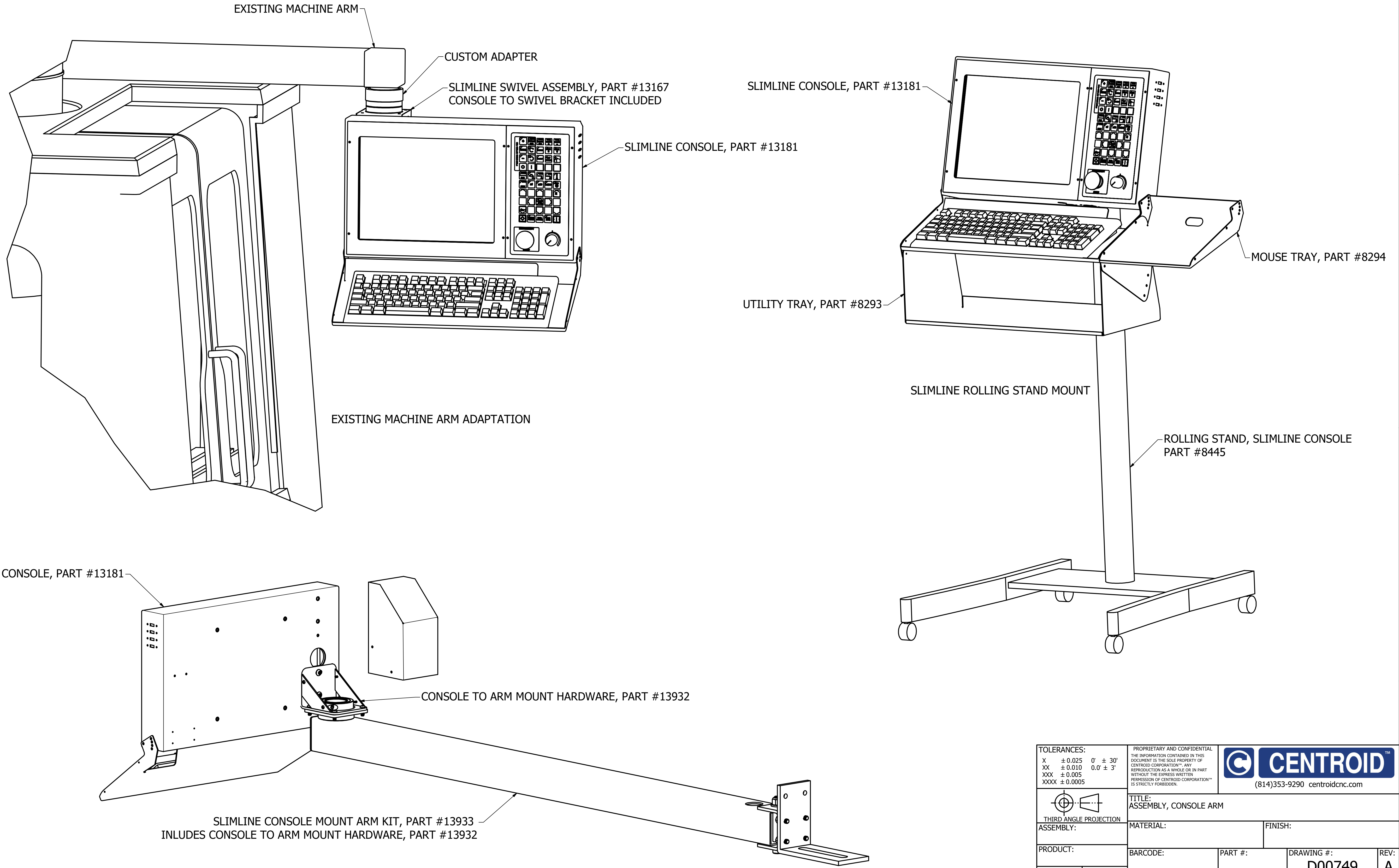
PRODUCT:

DRAWN: CNC User

APPROVED:

TITLE: ASSEMBLY, CONSOLE ARM			
MATERIAL:		FINISH:	
BARCODE:	PART #:	DRAWING #: D00749	REV: A
SIZE: D	WEIGHT: N/A	SCALE:	SHEET #: 3 OF 5

REVISION HISTORY				
ZONE	REV	DESCRIPTION	DATE	APPROVED
A		INITIAL RELEASE		



TOLERANCES:

X	± 0.025	0° ± 30'
XX	± 0.010	0.0' ± 3'
XXX	± 0.005	
XXXX	± 0.0005	

PROPRIETARY AND CONFIDENTIAL  
 THE INFORMATION CONTAINED IN THIS DOCUMENT IS THE SOLE PROPERTY OF CENTROID CORPORATION™. ANY REPRODUCTION AS A WHOLE OR IN PART WITHOUT THE EXPRESS WRITTEN PERMISSION OF CENTROID CORPORATION™ IS STRICTLY FORBIDDEN.



THIRD ANGLE PROJECTION	
ASSEMBLY:	
PRODUCT:	
DRAWN: CNC User	APPROVED:

TITLE: ASSEMBLY, CONSOLE ARM			
MATERIAL:		FINISH:	
PRODUCT:	BARCODE:	PART #:	DRAWING #: D00749
REV: A	SIZE: D	WEIGHT: N/A	SCALE: SHEET #: 4 OF 5

