

4

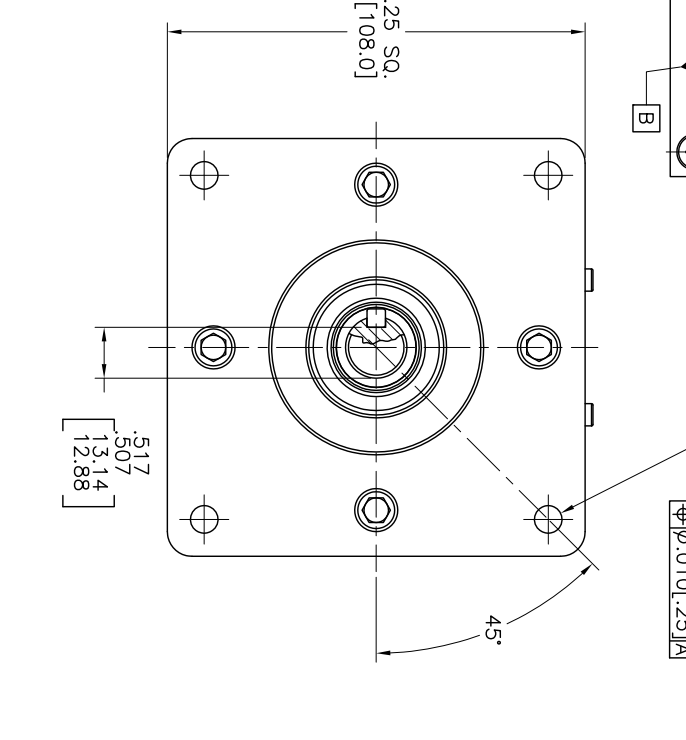
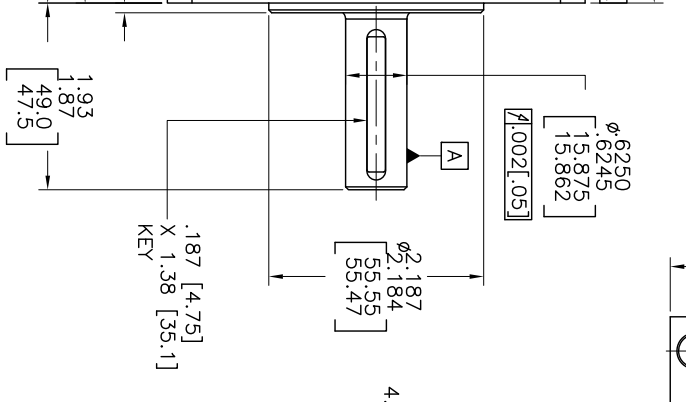
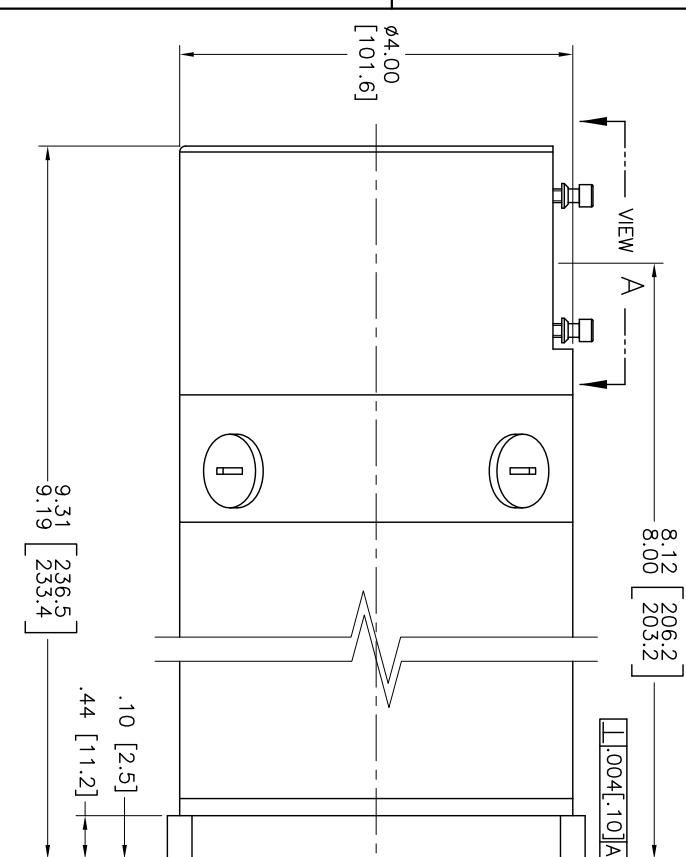
3

2

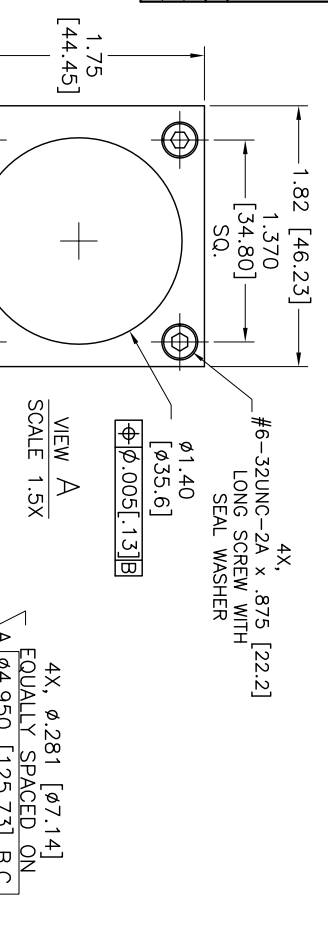
1

| | | |
|-------------------------|--------------------------------|-----------|
| MOTOR MODEL NO.: | GM4030-41 | |
| CONFIG. CODE: | GM4030-41-00902811-225C | |
| MOTOR CONSTANTS | UNITS | VALUE |
| CONTINUOUS STALL TORQUE | IN-LB | 29.0 |
| PEAK TORQUE | IN-LB | 145 |
| TORQUE CONSTANT (K-τ) | IN-LB/AMPS | 3.63 |
| RA* | OHMS | 1.60 |
| INDUCTANCE (L.A)* | MHY | 6.2 |
| BEWF* | VOLTS/1000 RPM | 44 |
| MAXIMUM SPEED | RPM | 3500 |
| INERTIA (I.A) | IN-LB-SEC ² | 0.01272 |
| TACHOMETER OUTPUT | VOLTS/1000 RPM | - |
| TACHOMETER RIPPLE | PERCENT | - |
| WEIGHT | LB/KG | 13.6/6.17 |

| | | | |
|----------------------------|----------------|---------------------------|-----------------|
| MOLEX: 5057-9409 | | AMP: 19-09-1039 | |
| 9 | 1 | 3 | 1 |
| PIN | FUNCTION | PIN | FUNCTION |
| 1 | CHANNEL A+ | 1 | MOTOR - |
| 2 | CHANNEL A- | 2 | MOTOR CASE GRND |
| 3 | CHANNEL B+ | 3 | MOTOR + |
| 4 | CHANNEL B- | | |
| 5 | CHANNEL Z+ | | |
| 6 | CHANNEL Z- | | |
| 7 | ENCODER +5VDC | | |
| 8 | ENCODER COMMON | | |
| 9 | ENCODER SHIELD | | |



| ZONE | | REV | | DESCRIPTION | | ECO | DATE | CHANGED | APPD |
|------|----|-------|-----|--------------------------------|--|------|--------|---------|--------|
| C4 | C1 | ADDED | 25" | TO COVER LENGTH (FOR APPROVAL) | | 5328 | 9MAR20 | K. HALE | R.D.M. |
| | | | | | | | | | |



1. WITH A POSITIVE VOLTAGE APPLIED TO PIN #1 (BLACK MOTOR LEAD), THE MOTOR DRIVE SHAFT WILL TURN IN THE "CW" DIRECTION AS VIEWED FROM THE SHAFT END.
 2. INCHES (MILLIMETERS).
 3. MOTOR FINISH: BLACK.
 4. SHAFT SEAL INSTALLED.
- NOTE: UNLESS OTHERWISE SPECIFIED.

| ENCODERS DATA CHART | |
|---------------------------|--|
| LINE COUNT | 5000 BPR |
| FREQUENCY RESPONSE | 200 KHZ MAX. (UP TO 85 °C) 100 KHZ MAX. (UP TO 100 °C) |
| RISE AND FALL TIME | 100 nSEC. MAX. |
| FRICTION TORQUE | 9.8 X 10 ⁻³ N · m MAX. (100 g · cm MAX.) |
| ROTOR MOMENT OF INERTIA | 6.5 X 10 ⁻⁶ kg · m ² MAX. (65 g · cm ² MAX.) |
| MAX. SPEED | 100 S ⁻¹ (6000 RPM) |
| OPERATING TEMP. RANGE | -20 °C ~ +100 °C |
| STORAGE TEMP. RANGE | -25 °C ~ +100 °C |
| VIBRATION (TEST ARTICLES) | 49 m/s ² (5 g) 10 ~ 500 Hz. |
| SHOCK (TEST ARTICLES) | 490 m/s ² (50 g) 11 mSEC. |

| | | | |
|--|------------------|-------------------------|--|
| UNLESS OTHERWISE SPECIFIED DIMENSIONS ARE IN INCHES | APPROVAL | DATE | 208 Standard Street Elyria, OH 44035 310.322.005 FAX 310.322.719 www.gilentek.com |
| DECIMAL: XXX = 30.05 | M. IACUBA | 30MAY17 | |
| ANGULAR: < = 30° | CHK'BY | | |
| FINISH: -135 / MAXIMUM | R.D.M. | 30MAY17 | |
| | APP'BY | | |
| | R.D.M. | | |
| THE INFORMATION CONTAINED WITHIN THIS DOCUMENT WAS ORIGINATED BY AND IS THE EXCLUSIVE PROPERTY OF GLENTEK, INC. THIS INFORMATION SHALL NOT BE REPRODUCED, COPIED, OR TRANSMITTED IN ANY FORM OR BY ANY MEANS, ELECTRONIC OR MECHANICAL, INCLUDING PHOTOCOPYING, RECORDING, OR BY ANY INFORMATION STORAGE AND RETRIEVAL SYSTEM, WITHOUT PRIOR WRITTEN PERMISSION FROM GLENTEK, INC. | | | |
| SCALE: 1:1 | MODEL: GM4030-41 | DRAWING NUMBER: 27731-1 | REV: C1 |
| FILE NAME: 27731-1RCL.DWG | | | |
| CONFIGURATION CODE: GM4030-41-00902811-225C | | | |